



## LEVEKI E TAU FANAU TUGA E AULO

**Tutalaaga he tau fanau mo e tau fuata ke he ha lautolu a tau fakaakoaga mo e akoagamena**

**Tau potaaga manatu mai he tau fakaholoaga mo e fanau mo e tau fuata ke moua e talahauaga ma e Tau Fakaakoaga mo e Tau Akoagamena Mahuiga he Kautu - Iuni 2019**

### **Kamataaga**

Ne huhu a mautolu ke he molea e 380 e tau akomena (learners) hagamoa ke he ha lautolu a tau mahaniaga mo e tau fakaakoaga mo e heigoa ne mahuiga kia lautolu ke ako ai. Ko e tau talahauaga ha nai he tau fanau / tamariki mo e tau fuata / rangatahi ne fakatutala mo mautolu kamata ia Oketopa kia Tisema he tau 2018.

Ko e tau tali ha lautolu, ke he potaaga hataki nai mo e ke he hataki katoa, to lagomatai aki e tauteaga fakamua nai ha Niu Silani ke he Talahauaga ma e Tau Fakaakoaga mo e Tau Akoagamena Mahuiga he Kautu (NELP).

Ko e tau manatu he ha talu tau fanau mo e tau fuata kua fakamatapatu aki e hatakiaga nai. Manatu a mautolu ko e tonuhia ni a ia. Kakano ni, ko lautolu ne fakamatapatu ki ai e tau puhala fakaako ha tautolu. Mo e ko e tau fakaakoaga ha lautolu ke takitaki aki e kautu anoiha. Fakaaue atu a mautolu kia mutolu oti ne matutaki mai mo e amanaki ko e potaaga nai mo e hataki he fakaholoaga kua fakatautonu e tau manatu ha mutolu.

Ne tutala gutu a mautolu mo e tau akomena mai Niu Silani katoa, falu magaaho mo e tau mamatua, tau faiaoga, tau leveki Māori mo e tau lagomatai kua fakalataha ai. Fakatutala a mautolu ke he tau fanau ikiiki, falu ne nakai fai komopiuta poke ai matutaki mitaki ke he initanete, tau Māori, Pasifika mo e nonofo he tau faahi ki tua, tau tagata he LGBTQIA+, lautolu ne mahani taane poke fifine fakakehekehe, tau fuata ke he faahi fakafili, mo e tau fuata he tau fakaakoaga kehekehe mo e tau aoga sipesilisi.

Ke he tau fakatutalaaga ne huhu a mautolu:

- Heigoa ne fiafia a koe ki ai ke he aoga haau?
- Lagomatai e hai a koe ke akomena mo e heigoa ne mitaki kia koe?
- Heigoa ne logona ai e koe e matutakiaga mo e matalahi ke he aoga haau?
- Heigoa haau ne manako ke akomena ki ai? Fefe e kautu he tau gahua he kitia e koe?

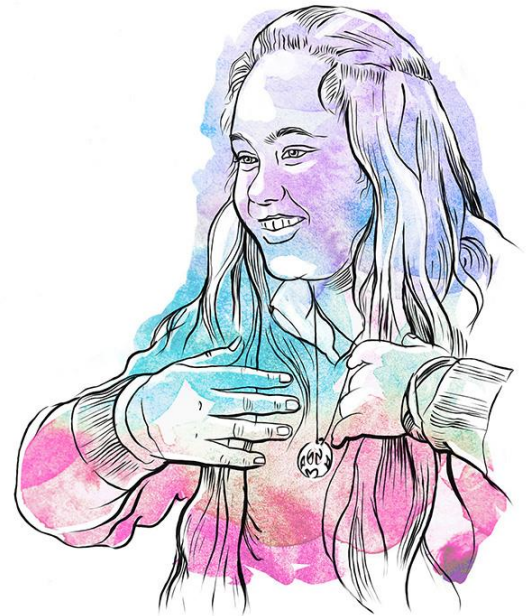
## Tau manatu uho

Kua kitia ai ko e loga he tau akomena ne ai fiafia ke he tau mahaniaga he tau aoga lalahi ainei, ti nakai fa logona e matutakiaga, mo e kitia maali e nakai fakatatai he tau puhala gahua. Ko e tau mamatua mo e tau fanau, pete ne logona kua maeke ke taute, kua uka ke matutaki ke he tau mahaniaga fakaako he ha lala tau akomena.

## **Lata ke leveki ha talu tau fanau tuga e aulo, ti foaki kia lautolu e puhala ke tutupu ai.**

- **Fuata Māori he faahi fakafili**

Ke he falu fakaakoaga fakakehe, loga he tau akomena ne matutaki mitaki mo e tau faiaoga, fiafia ke he tau fakaakoaga mo e moua e tau fakaakoaga ne manako ki ai. Ne fakaohoho e tau mamatua mo e magafaoa ke matutaki ke he tau akoagamena ia. Tau fakaholoaga ma e tagata takitokotaha mo e tau aga kau auloa ne fakakite ha lala tau fekehekeheaki mo e mahuiga ke kautu ai. Kakano kua mahomo atu e tau aga fakaako mo e kehe mai he tau kitiaaga he tau aoga lalahi/auloa. Kae pehe e tau akomena ko e tuga e fakafano a lautolu ke he 'vahega kapiti' ka uta ke he tau puhala fakaako kehe.



Moua e mautolu mai he tau akomena ne fakatutala e mautolu ko e fetataiaki ni e tau kitiaaga, mo e tau mena ne moua mai he tau fanau mo e tau fuata he tau fakatutalaaga he Kōrero Mātauranga.

Tau fakakiteaga ha lautolu kia mautolu ha nai:

### **1 Leveki fakamitaki a mautolu mo e fakatautonu ha malu tau magafaoa**

Ko e moua he tuaga mitaki mo e taliaaga kua mahuiga ke he tau atuhau oti mo e tau matakau oti ti ko e uho manatu ne omoi auloa fakalahi ki ai.

- Loga e tau mena ne lagomatai aki e mitaki he moui mo e matutakiaga. Mai he taliaaga haau ko e taha tagata, moua e tau fakaakoaga tonu, mo e loga e tau kapisiga, kae nakai moua e tau aga fakaehiehi ke he tupumaiaga poke aga fakataane/fifine.
- Kakano he matutakiaga ke fakalilifu e tuaga haau, vagahau mo e aga fakamotu.
- Ko e moui mitaki he tau fanau mo e tau fuata ke he tau fakaakoaga kua lauia ai ke he tau fakafetuiaga ha lautolu mo e tau faiaoga mo e falu he atuhau taha.
- Ko e taliaaga he tau kaina mo e tau magafaoa kua mahuiga ni ke he matutakiaga.

### **Leveki e tau fanau tuga e aulo**

Tutalaaga he tau fanau mo e tau fuata ke he ha lautolu a tau fakaakoaga mo e akoagamena

## *Fakalilifu e fekehekeheaki - taliaaga mo e fakalatahaaga*

Logona he tau akomena e fakalilifu mo e fakalataha kaeke kua talia a lautolu. Ko e kakano ke fakaako he puhala kua gahua ma lautolu mo e maeke ke huhu atu kae nakai fakafeki poke vaiga ki ai.

*Fiafia au ke oatu a mautolu ke he fale ke fakatali lagomatai.*

- *Mai tua kehekehe e tau*

*Fiafia lahi au ke ako Māori.*

- *Fuata Māori he faahi fakafili*

*Ke fai fakafifitakiaga. Tamai e tau fakafifine/taane kua oti mo e aoga kae kua kautu. . . . Tamai e tau matua fakafifine/taane.*

- *Fuata LGBTQIA+*

Pehe e tau akomena ko e tokologa he tau matua ha lautolu ne nakai fai tuaga ke he tau takatakai akoagamena mo e iloa maali e mena nai.

*Nakai hagahaga mitaki e falu matua ke he tau takatakai aoga - finatu a Mami ke he tau fekau aoga, kae fano a Tete ke he tau sipote.*

- *Matakau Fakatonu he tau Fuata*

Ko e holoaga he tau fakaakoaga kua fa lauia ai e matutakiaga he falu ka mafifti lahi ti to tua ai, mo e tuga e nakai tupetupe e faiaoga. Kua fakaoti e tau huhu ha lautolu mo e nakai fia gahua.

*Logona e au e matutaki ka huhu atu au ti ko lautolu, ko e faiaoga, ne tali mai au, mo e tali ne manako au ki ai, mo e nakai fai tagata ne kata ai ha kua tuga e tagata goagoa au.*

- *Fuata 17 tau he levekiaga fuata*

## *Tau mahani nakai mitaki*

Eke fakakelea lahi ke he tau tupumaiaga, fakakehe mo e fakavihia ne kitia ke he tau aoga. Ko lautolu kua lata ke fai lagomatai ke akomena ne fa logona ai e fakavihia.

Tau kupu fakakelea ke he tupumaiaga mai he falu akomena poke kitia kua taute fakamitaki he faiaoga e falu atu motu, ko e falu mahani fakakelea ke he tupumaiaga ne kitia ai. Lauia kelea he mena nai e manako ke matutaki fakalataha.

*Nakai kitia e taha e tau fakakelea ke he tupumaiaga. Nakai talaage e taha ki ai kua hepe a lautolu.*

- *Pulaemeli fakaakoaga kehe 5 - 10 e tau*

## **Leveki e tau fanau tuga e aulo**

Tutalaaga he tau fanau mo e tau fuata ke he ha lautolu a tau fakaakoaga mo e akoagamena

Lauia e tau akomena he ai loga e tau fifiliaga mena 'fifine mo e taane' kua nakai mitaki kia lautolu, mua atu ke he tau tagata ne nakai taane poke fifine. Ko e kakano kua nakai fakakite e ha lalo tau kehekeheaga he tau aoga, ti kitia maali he mena nai e taofi he fifiliaga he tau akomena oti ha ko e tau manatu uka tuhituhi he tau tagata.

*Ko e tau fakaako taane/fifine ne omoi e tau akomena ke maitua ke he tau fifiliaga talia aulua.*

- *Asian Lainifuata Asia*

Lauia e tau akomena he tau agavale. Fai agavale ke he tino ne fakakite ai, kae loga atu ke he tau tagata 'mahani kelea'.

*Heigoa e tau mena ne nakai fiafia a koe ki ai? Fai tagata ne ai mahani mitaki kia koe, tamoto mo e sele a mautilu, tauliti patuo poke toi, eke fakakelea kia mautilu.*

- *Taki 4 e tau*

Ko e keli fakaoti tuai he moui kua lauia ai e tau momou he falu akomena. Ko e tali fakatautonu he aoga mo e tau faiaoga ke he fakaoti tuai he moui kua logona ai ko e tau tagata aoga ma anoia.<sup>1</sup>

*Fia iloa au ko e fiha e tagata ne kumi lagomatai ne lagomatai ai foki he tau mogo fakamui.*

- *Tau fuata mai tua ne fae ako-gahua*

Ko e tau taute aoga ne lauia ai e manako ke matutaki ke he aoga ma e loga he tau akomena mo e loto ke fakakite ha lautolu a tau kehekeheaga. Ko e maitua ke he tau fakatufono kua taofi ai e falu tagata ai matutaki he nakai maeke ke togi e taute aoga katoa poke fai mena tote ne kua kelea.

*Fakamua e taute aoga ke he aoga. Poka kehe e lautolu e tau mena faka-taane/fifine mo e agavale, kae kikite lahi ke he tau taute aoga.*

- *Aoga Tokoluga Pasifika mo e LGBTQIA+*

Ko e kakano he katoa he mitaki mo e matutakiaga ko e taliaaga he tagata kua fakatautonu e kehe he haana a tau puhala akoagamena. Ka ko e pehe, ko e tauteaga ke fakatatai ai ma e tau tagata oti.

*Fakakehekehe ke he poko-aoga. Kitia e au falu faiaoga ne taute fakamitaki lahi e falu akomena kae fakavihia poke kiva e falu.*

- *Kaina fakaako-mena*

---

<sup>1</sup> Ke kumi lagomatai ka manatu a koe ke fakaoti e moui poke iloa taha kua manatu pihia, ti kamata a hinai <https://www.mentalhealth.org.nz/get-help/a-z/resource/50/suicide-coping-with-suicidal-thoughts>

## 2 Fiafia a mautolu ke he tau takatakai akoagamena kehekehe

Ko e takatakai akoagamena kua lata ke fakatautonu e puhala fakaako he tau akomena. Falu ne manako ke ua fakahoha poke fakaako komopiuta kae ko e falu akomena ne loto ke gahua mo e tau alaga he tino.

*Ko e faiaoga he aoga lahi ne maama a mautolu ko e tagata ne iloa ko e akomena fefe a koe. Kehekehe e akomena he tau tagata kae tatai oti e puhala fakaako he tau faiaoga.*

- Aoga Tokoluga fakaakoaga kehe

Kitia he tau akomena e fiafia ke fakaako ka hikifano he faiaoga e tau puhala fakaako. Ke tuga mo e fakaako ki fale poke ki fafo mo e ataina ke oatu ke fakaako ke he tau vahega sipesilisi.

*Fakaako e mautolu e Gateway he aoga. Kelea ha ia he tau fakaehiehi. Ai manako e tau tagata ke taute, ka e lahi e mena haau ne iloa mai ai he oti ai.*

- Fuata LGBTQIA+

Kitia he tau akomena e tau fakaakoaga nakai fakatatai lagakina ha ko e tau vahega fakapapahi. Logona lahi he tau akomena e fakahigoa ha ko e nofo he vahega kehe poke vahega ki lalo. Kae pete ia tokologa ne logona e hagahaga mitaki he tau akoaga mena ia mo e tau puhala fakaako fakakehe. Talahau e lautolu ko e fakaakoaga fakakehe ne moua e lautolu e ataina mo e tau lagomatai takitokotaha, ti nakai fakatapatapu ke tuga he tau aoga auloa. Matutaki lahi e mena nai ke he lahi he magaaho ne moua he akomena mai he faiaoga mo e tote/lahi he vahega.

## 3 Manako a mautolu ke he tau fakaakoaga kehekehe

Mahuiga e tau mena kua ako mo e moua he tau fakaakoaga kua fifili ki ai. Pehe e tau akomena ko e tau fakaakoaga kua lata ni ke fai vahega mena ke lata mo e lakaaga ki mua he moui. Ko e ataina ke fifili e tau fakaakoaga, fifili ko e fakaako gahua lima poke tohitohi, ti fakatautonu e tau aga fakamotu, mo e toka ai e fifiliaga ia ke he tau aoga auloa, kua mahuiga ke he tau akomena nai.

*Kua lata ke loga atu e tau fakaakoaga. Manako e tugaane haaku ke fakaako taute komopiuta kae ai fai fakaakoaga pihia.*

- Fuata mai tua ne fae ako-gahua

*Ka loga e tau fakaakoaga [he aoga fakakehe] - to maeke a mautolu ke taute e tau fakaakoaga. tuga he tau aoga lalahi. To fifili foki e mautolu e logonaaga.*

- Aoga Tokoluga fakaakoaga kehe mai tua, tu-tapitapi

Ko e tau akomena Māori kua talahau ai ko e fiafia ke he mahaniaga, mo e fiafia ke fakalataha mo e tau tagata tuga ni a lautolu.

## Leveki e tau fanau tuga e aulo

Tutalaaga he tau fanau mo e tau fuata ke he ha lautolu a tau fakaakoaga mo e akoagamena

#### 4 Ko e mitaki he faiaoga kua mahuiga ni

Tau faiaoga ne maeke ke fakatu e tau matutakiaga mo e lotomatala haggao ke he tuaga, vagahau mo e aga fakamotu he akomena ke lauia mitaki e manako ke kau fakalataha.

Ko e kitiaaga he tau akomena ko e tau faiaoga ka fakakehe lahi ai e tau fakaakoaga mo e tau tutuaga ha lautolu he tau aoga. Manako e tau akomena ke he tau faiaoga mahani fakaalofa mo e totonu, ne taute e tau mena fakaako ma e tagata tokotaha, ti fakatatai e tau magaaho ma lautolu ne lata ke lagomatai.

*Omoi he faiaoga haaku a mautolu kae taute fakamitaki. Gahua fakamalolo a mautolu he vahega haana he tuga kua fakatupe e ia a mautolu.*

- Aoga Tokoluga Pasifika mo e LGBTQIA+

Fakalilifu he tau akomena e tau faiaoga ataina, maama mo e loto fakaalofa, mo e fa kumi magaaho ke fakafetui mo lautolu ke moua e tau puhala fakaako aoga mo e tonuhia. Logona lahi he tau akomena e tau lagomatai ke he ha lala tau fakaakoaga kaeke kua pihia e tau faiaoga mo e tufatufa ha lautolu a tau fiafia ke fakaako.

*Tokologa ia mautolu ne fiafia ke he taha e faiaoga (he tala ke he faiaoga Fakaako Kehe). Makaka lahi a ia, uta tua mau kia mautolu, tu hako he uho, vagahau kia mautolu ka hepe e tau mena taute.*

- Aoga Tokoluga fakaakoaga kehe

Ko e tau faiaoga ne ai fakatautonu e tau manako fakaako, fa gutuvale, ai fakatatai poke fakakite mahani fakavihia ka lauia kelea ai e tau makaukau mo e tuaga mitaki he tau akomena. Pehe e falu akomena logona e lautolu e fakama mo e eke fakakelea. Tokologa ne pehe kua ai fakatautonu e tuaga, aga fakamotu mo e vagahau ha lautolu.

*Ai fakaata he faiaoga a mautolu ke fai huhu. Nakai lagomatai a lautolu. Fekau e tau tagata ke tali e tau huhu, mo e nakai fifili ni e koe. Nakai fiafia a koe.*

- Mai tua kehekehe e tau moui

Manako faiaoga mitaki e tau akomena oti, mo e manako ke kautu. Nakai lagomatai e tau faiaoga ne fa vagahau eke fakakelea, fakatagata poke tuhituhi ke he tau tagata ne nakai iloa e tau tali kua hako.

#### Leveki e tau fanau tuga e aulo

Tutalaaga he tau fanau mo e tau fuata ke he ha lautolu a tau fakaakoaga mo e akoagamena

## 5 Fakamukamuka e fakaholoaga (ke he tau aoga i luga mo e ke he tau gahuaaga)

Fa uka e tau fakaholoaga ti tupu ai e fakauaua mo e tupetupe. Uka foki ka manamanatu ki mua, he nakai iloa lahi ko e heigoa foki ke matutaki ki ai, he neke ko e aoga foou, poke ko e gahua fakamua la ia.

*Nakai mau au ke finatu he aoga ha kau mahani lahi mo e ECE, iloa e tau tagata mo e tau kapisiga.*

- Pulaemeli Tau 3

Hiki atu he kura ke he aoga vagahau Palagi ko e taha vihiaga ma e falu ne nakai katoa e lagomatai he vagahau ke ua. Tufatufa manatu e tau akomena haggao ke he galo he tau kapisiga mo e kumi kapisiga foou, fakako ke ofano, mo e heigoa ke taute he tau hake. Liu onono ke he tau hikiaga, pehe e falu akomena ko e nakai moua e lautolu e tau lotomatala ma e moui ne kua lata ke moua.

Ko e nofo fakaku mo e utakehe mai he aoga ko e mena lahi ke lauia ai e tau fuata. Manako e tau akomena kua lauia he mena nai ke fai lagomatai ke maeke agaia a lautolu ke oatu he aoga.

*Utakehe au he aoga - 2 e tapu he mole, ti manako au ke liu atu, galo mo e haku tau lafu.*

- Fuata Māori mo e Pasifika he faahi fakafili

Ka teitei fakaoti mo e aoga kua manako lagomatai e tau akomena mai he tau kanosela mo e tau fifiliaga ma anoiha. Ko e lagomatai ke fakatautonu oti e tau mena kae nakai ni ke he tau puhala fakaako ki luga mo e ua tau ai e manatu fakakelea ke he fifiliaga, mo e tuga, ke fakaloga atu e tau ako apulenetisi. Kua ku e tau lagomatai mo e tau vahega mena ke fakakautu aki e fakaholo ki mua he kitia he tokologa he tau akomena.

*Manako au ke Talaga-mena kae pehe a lautolu ko e iloilo au ti ai lata mo e gahua pihia.*

- Aoga Tokoluga Pasifika mo e LGBTQIA+

## Leveki e tau fanau tuga e aulo

Tutalaaga he tau fanau mo e tau fuata ke he ha lautolu a tau fakaakoaga mo e akoagamena



## 6 Fakaigati e tau mena kua lata ke moua

Nakai katoatoa e fakatautonu he tau manako he tino ma e akomena. Ko e tau mena ua ne logona lahi he tau fakatutalaaga, ko e lahi e mena ke kai, mo e ke fai falevao kehekehe ke fakaaoga.

Logona e mautolu ko e tau mena ikiiki nai kua fa lauia ai e falu akomena he tau aho oti:

- Finatu hoge he aoga poke fakatau uka he tau mena kai he kenetini he aoga.
- Kua iloa ko e tau lahi he tau fakaakoaga kua lauia ai e tau magafaoa ha lautolu - taute aoga, tau koloa tohitohi, totogi he pasi, totogi/fi he aoga.

*Ko e (ai fai mena kai) e taha utakehe manatu ke ua akomena. Ka nakai katoa e tau mena pauaki ia to nakai finatu a koe he aoga ke akomena.*

- Fuata Māori mo e Pasifika he faahi fakafili

*Fiafia au ke he vahega tunukai he fa mai he tau faiaoga e tau mena ke kai.*

- Vahaloto mai tua mo e nakai fai fakatititolo

- Ke he falu, ko e fakaaoga he tau falevao, mo e lata tonu nakai, ne fa lauia ai e ha lautolu a tau mahaniaga ke he tau aoga.

*Lata ke fai logonaaga ke he malolo he loto mo e lauiaaga he tau akoagamena. Lata ke fai puhala loga atu foki mo akoagamena. Kua lata ke logona e moui fiafia ke he tau aoga, ti nakai pihia tumau, ha ko e tau agavale mo e nakai fai poko koukou ma e tau tagata ke fakaaoga.*

- Fuata LGBTQIA+

## Leveki e tau fanau tuga e aulo

Tutalaaga he tau fanau mo e tau fuata ke he ha lautolu a tau fakaakoaga mo e akoagamena



Pete ni kua tatai foki e tau mahaniaga mo e tupetupe he tau akomena mo lautolu mai he tau fakatutalaaga he Kōrero Mātauranga, ko e kehekehe ne kitia ai ke he fakaholoaga he NELP kua kitia ai e mahuiga he matutakiaga mo e tau akomena mai tua he tau fakaakoaga auloa. Ko e tau akomena nai ne fa moua e tau mahaniaga mitaki mai he tau puhala fakaako kehe poka mooli kua moua mai he tau falepouli.

#### **Leveki e tau fanau tuga e aulo**

Tutalaaga he tau fanau mo e tau fuata ke he ha lautolu a tau fakaakoaga mo e akoagamena

## Heigoa e Talahauaga ke he Tau Fakaakoaga mo e Tau Akoagamena Mahuiga he Kautu (NELP)?

Ko e Tau Fakaakoaga mo e Tau Akoagamena Mahuiga he Kautu ke fakatokatoka e tau mena mahuiga he fakatufono ma e ha talu tau aoga fakatufono, kura, tau aoga pulaevete, tau aoga fanau ikiiki, me nga kōhanga reo, mo e Tau Matakavi Akoagamena | Kāhui Ako. Ko e tau aoga, kura, mo e tau aoga fanau ikiiki, ke fakaaoga e tau mahuiga nai, fakalataha mo e ha lautolu ni, ke lagomatai e tau fanau mo e tau fuata oti ke fakaholo ki mua mo e moua e kautu malolo katoa.

Ko e Education Act 1989 (Fakatufono Tohi) ne kua fakaatā e Minisita he Tau Fakaakoaga ke fakakite, ka oti e tau fakatutalaaga, e talahauaga ke he Tau Fakaakoaga mo e Tau Akoagamena Mahuiga he Kautu.

To lagomatai he NELP e tau faahi faako oti ke iloa e tau mena kua lata ke fakaako aki e tau akomena ha tautolu. To lagomatai foki he NELP e tau mamatua, tau levekitama mo e magafaoa ke iloa atu foki e tau mena kua mahuiga ke he tau faahi fakaako he matakavi ne kua fakaako aki e ha lalau tau fanau mo e tau fuata.

### Heigoa e lakaaga ki mua?

Ke matutaki ke he [Fakatutala Fakaako | Kōrero Mātauranga](#), to fakatutala e Minisituli he tau Fakaakoaga mo e faahi fakaako mo e tau tagata haggao ke he fakataitai NELP ato fakaoti e tau 2019. Ko e 8 e faahi tapu ke taute ai e fakatutalaaga nai.

To kitia ke he fakataitai NELP e tau leo ha he hataki nai, lafi ki ai e tau tagata fakaako, tau mamatua, tau takitaki aoga, tau fanau mo e tau fuata mai he:

- 16,000 he tau tagata ke he kumikumiaga onolaini he Korero Mātauranga;
- tau kumikumiaga fakaako ainei; mo e
- tau talahauaga he wānanga mo e fono ke he tau fakaakoaga ma e tau tagata Māori mo e Pasifika.

To maeke a koe ke fai talahauaga ke he kumiaga onolaini poke ke he tau fono mo e tau fanau mo e tau fuata, tau mamatua mo e faahi fakaako, ka fakahoko ai he tau magaaho ka taute ai e tau fakatutalaaga. Amanaki a mautolu ke fakakite e NELP ato oti e tau 2019.

### Falu talahauaga foki

Maeke a koe ke kumi tala foki ke he NELP ke he pu nai [hinai](#), mo e ke he falu gahua ha mautolu he Kōrero Mātauranga | [Fakatutala Fakaako](#) ke he pu nai [hinai](#).

### Leveki e tau fanau tuga e aulo

Tutalaaga he tau fanau mo e tau fuata ke he ha lautolu a tau fakaakoaga mo e akoagamena